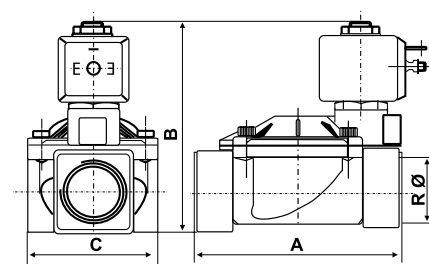


M23

Servo-assisted diaphragm valve bodies, normally-closed

Solenoid valves suitable for large flow capacity, suitable for water, air, fuel-oil, inert gases and other non-corrosive fluids, for copper alloys fluids with viscosity up to 2° Engler.



type	A	B	C
M23C13	69	2,5	40
M23D13	72	94,5	40
M23E20	100	100	65
M23F25	104	105,5	65
M23G35	145	127	102
M23H40	145	127	102
M23I50	173	141	118

Dimensions (mm)

N.B. Dimensions and weights are including the coils

	Passage orifice diameter	Female connection	KV m ³ /h	Closing time DP of 1 bar	Minimum differential pressure	Maximum differential pressure	Testing pressure (DIN2401) PN
M23C13	13 mm	G 3/8	3	1 sec.	20 bar	0.1 bar	25 bar
M23D13	13 mm	G 1/2	3	1 sec.	20 bar	0.1 bar	25 bar
M23E20	20 mm	G 3/4	8.4	1.5 sec.	20 bar	0.1 bar	25 bar
M23F25	25 mm	G 1	9.6	1.5 sec.	20 bar	0.1 bar	25 bar
M23G35	35 mm	G 1 1/4	25.2	2.5 sec.	10 bar	0.1 bar	16 bar
M23H40	40 mm	G 1 1/2	30	3 sec.	10 bar	0.1 bar	16 bar
M23I50	50 mm	G 2	37.2	3.5 sec.	10 bar	0.1 bar	16 bar

Kv = water flow in m³/h with pressure drop of 1 bar (1 bar = 100kPa).

INSTALLATION

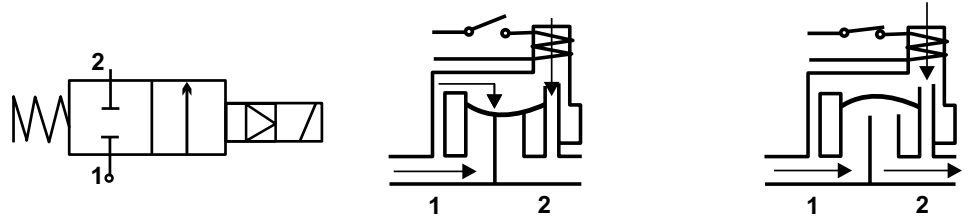
Female threaded connection from G 3/8 to G 2.
The valves can be installed in any position.

OPERATION

2-way execution, normally-closed.

Indirect operation with blocked servo-membrane.

The fluid under pressure before the valve enters the space above the membrane, pressing it against the seat, blocking the passage. When the coil is energized, the pilot plug opens discharging the flow, therefore the media lifts the membrane disc, opening passage orifice of the fluid.



FEATURES

Press-forged brass valve body OT58 UNI 5705.

Gaskets in NBR (Buna N) - Viton.

Rod in stainless steel AISI 304.

Core in stainless steel AISI 430F.

Spring in stainless steel AISI 302.

Antivibration brass ring.

Operating temperature: $-10 \div 90^{\circ}\text{C}$.

Unit weights:

- M23C13 0.55 Kg
- M23D13 0.58 Kg
- M23E20 1.02 Kg
- M23F25 1.10 Kg
- M23G35 3.15 Kg
- M23H40 2.90 Kg
- M23I50 4.3 Kg

ELECTROMAGNETS

The control coils are supplied separately from valve bodies.

See page IM2, series tensions, technical specifications and the codes for ordering.

ACCESSORIES



IM21D
Control coil 12Vac 50/60Hz



IM21F
Control coil 24Vac 50/60Hz

IM21H
Control coil 110Vac 50/60Hz

IM21M
Control coil 230Vac 50/60Hz

IM22
Control coil 24Vdc
(with coil in d.c. the indicated pressure
should be reduced by 60%)